

FILES: TIFF, EPS, PDF - 300dpi/CMYK

Magazine formats: 225x285 mm + 3 mm for cropping of all sides

Annotation: All fonts must be transform to curves

Marges for text: 12 mm of interior side and 6 mm of other sides



Whole page 1/1

Format: 225x285mm

(+ cropp of 3 mm of all sides)

First page (A1)

Format: 225x285mm

(+ cropp of 3 mm of all sides)

Second and third cover page (K2 ili K3)

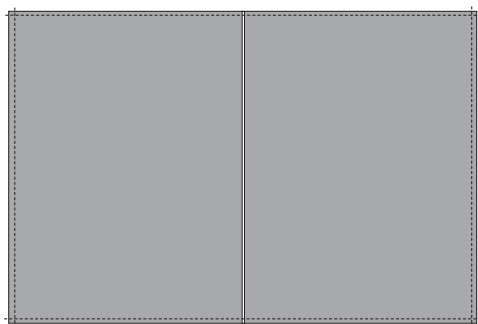
Format: 225x285mm

(+ cropp of 3 mm of all sides)

Back cover page (K4)

Format: 225x285mm

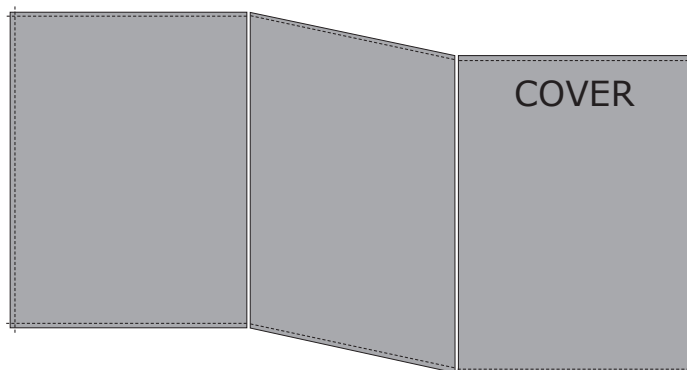
(+ cropp of 3 mm of all sides)



Double

Format: 450x285mm

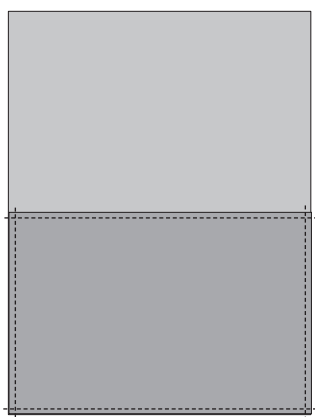
(+ cropp of 3 mm of all sides)



Double cover

Format: 2x225x285mm

(+ cropp of 3 mm of all sides)

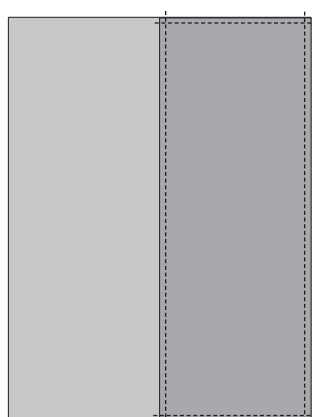


Half of a page

(horizontal)

Format: 225x143mm

(+ cropp of 3 mm of all sides)



Half of a page

(vertically)

Format: 108x285mm

(+ cropp of 3 mm of all sides)



Third of a page

Format: 76x285mm

(+ cropp of 3 mm of all sides)